

# CREAM PUMP

DELICATE LIQUID



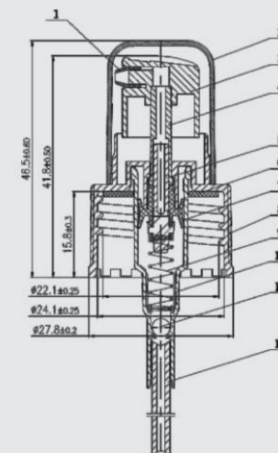
## Cream Pump

Size: 18/410, 18/415, 20/410, 24/410, 28/410  
Color: can be customized  
Discharge Rate: 0.2cc, 0.4cc, 0.6cc  
Use: For cream, Foundation, serum, lotion

**Size** 18/410, 18/415, 20/410, 24/410, 28/410  
**Use** For cream, foundation, serum, lotion

**Color** Can be customized  
**Discharge Rate** 0.2cc, 0.4cc, 0.6cc

### Internal STRUCTURE



No	Name	Material
12	Dip tube	PE
11	Ball	GLASS
10	Housing	PP
9	Spring	304
8	Closure	PP
7	Lower piston	PE
6	Gasket	PE
5	Stem insert	PCB
4	Up piston	PCB
3	Actuator	PP
2	Cap	PP
1	Nozzle	PCB



SM-CP-04

SM-CP-10



SM-CP-11

SM-CP-15

SM-CP-20

